



C - AIR Series

Reliable Screw Air Compressor



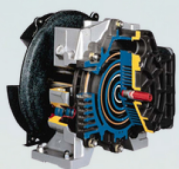
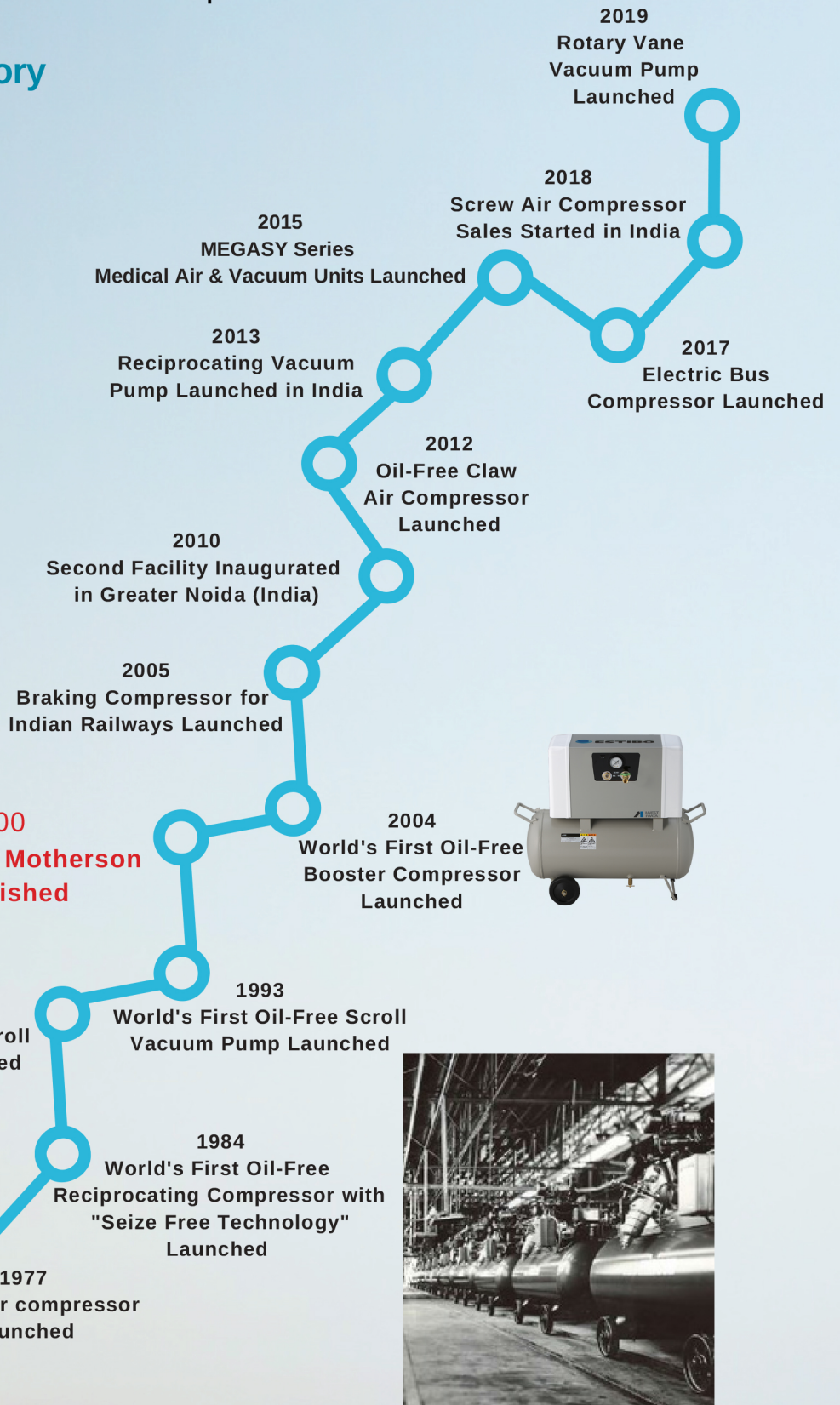
The Air of Trust

Anest Iwata Motherson

Anest Iwata Motherson (AIM) is a joint venture between Anest Iwata Corporation, Japan, and Motherson Group, India. Anest Iwata Corporation is one of the global leaders in Air Compressors and Vacuum Pumps with more than 9 decades of inspiring history of technological excellence.

Anest Iwata Motherson is committed to delighting its customers by ensuring the supply of the best quality products, supported with effective after-sales services at optimum value. The company has two state-of-the-art manufacturing facilities and a wide network of sales and service centers spread across India.

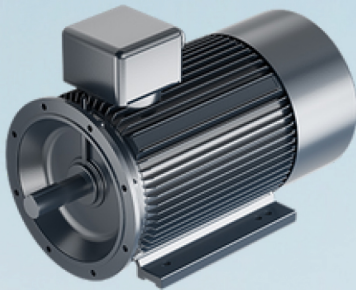
Anest Iwata Inspiring History



High Quality Components

- **Highly Reliable Air-end**

Machined by high precision CNC machine, and inspected by high precision 3D inspection machine. Onsite high reliability proved in the market for decades, 5:6 Profile rotor equipped with world-famous bearing.



- **IEC Standard TEFC Motor**

TEFC, IP 55 Protection Grade, F Grade Insulation, S1 Duty ensures stable running even in 24hour / 7-day applications. Top-quality SKF motor bearings ensure long service life.

- **Oversized Cooler**

An oversized cooler with a 30% reserve margin, ensures excellent cooling even under high ambient conditions, For decades it has been proven even in tropical countries, like UAE, Saudi Arabia, etc.



- **Siemens Core Components**

1. Oversized Siemens contractors are selected. It's for the stable operation to ensure longevity, even in the heaviest duty applications.
2. Intelligent PLC control, which monitors all key running parameters of the compressor. The PLC reports on 12 alarms and 13 security protections.

Technical Specifications



Model	Unit		C-AIR 8	C-AIR 10	C-AIR 15	C-AIR 20	C-AIR 25	C-AIR 30	C-AIR 40	C-AIR 50
Power	HP		7.5	10	15	20	25	30	40	50
	kW		5.5	7.5	11	15	18.5	22	30	37
Maximum Pressure	Bar	7.0 / 8.0 / 10.0 / 12.5								
Pressure Control Range	Bar	6.0 - 7.0 / 7.0 - 8.0 / 9.0 - 10.0 / 11.5 - 12.5								
Capacity (FAD)	7 Bar	CFM	31	40	58	84	123	138	185	235
	8 Bar	CFM	29	37	55	80	110	127	181	225
	10 Bar	CFM	26	33	51	69	101	116	153	207
	12.5 Bar	CFM	23	30	44	63	90	102	135	186
Discharge Connection	inch		RC 1/2	RC 1/2	RC 3/4	RC 3/4	RC 1	RC 1	RC 1	RC 1-1/2
Sound Level (@ 1 Meter)	dB(A)		68	68	66	70	73	73	73	75
Dimensions	Length	mm	900	900	800	800	900	900	900	1000
	Width	mm	680	680	950	950	1150	1150	1150	1300
	Height	mm	970	970	1130	1130	1350	1350	1350	1470
Weight	Kg		230	250	380	420	530	580	640	800

Note :

- Standard Voltage is 415V/50Hz
- Free Air Delivery (FAD) is measured as per ISO 1217: 2009 - Annex C
- Mean noise level measured at a distance of 1 m according to ISO 2151: 2004 using ISO 9614/2 (sound intensity method); tolerance ± 3 dB(A)
- All performance parameters are as per JIS (Japanese Industrial Standards)
- Standalone Refrigerated Air Dryers, Heatless Air Dryers, Oil Removal Filters, and Auto Drain Valves are also available upon request
- Specifications may change without prior notice



Engineering Capabilities & Customised Solutions.

We at Anest Iwata Motherson (AIM) are committed to delighting our customers. Our state-of-the-art Air Energy Core Technology Centre located in Yokohama, Japan works relentlessly on innovations and technologies that add value to our products and make us ready to serve our customer's future needs. It is our customer's trust in us that we have developed many "World's First" products.

Always Ahead with Anest Iwata!

**Innovation driven
World's 1st
products**



**Oil Free Reciprocating
Compressor**



**Oil Free Scroll
Compressor**



**Oil Free Booster
Compressor**



**Oil Free Scroll
Vacuum Pump**

Anest Iwata
Australia Pty.
Ltd.



Reciprocating



Screw



Scroll



Claw

Compressed Air Solutions in all Technologies

Active with Newest Technology



**AS AN AUTHORIZED CHANNEL PARTNER OF
ANEST IWATA MOTHERSON PVT. LTD.**

DELTA COMPRESSORS & EQUIPMENTS

41/608-A, MUKKANNIYIL APARTMENTS, K.D PLOT P.O

S.KALAMASSERY, ERNAKULAM - 683104

E-Mail : delta.compres@gmail.com

Web: www.deltacompressors.in

For any details reach us at: 24 x 7 Service Helpline: +91 9447205440, 9895678611