



# MEGASY

medical gas systems



Proud to be part of samvardhana **motherson** 

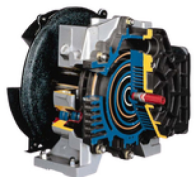
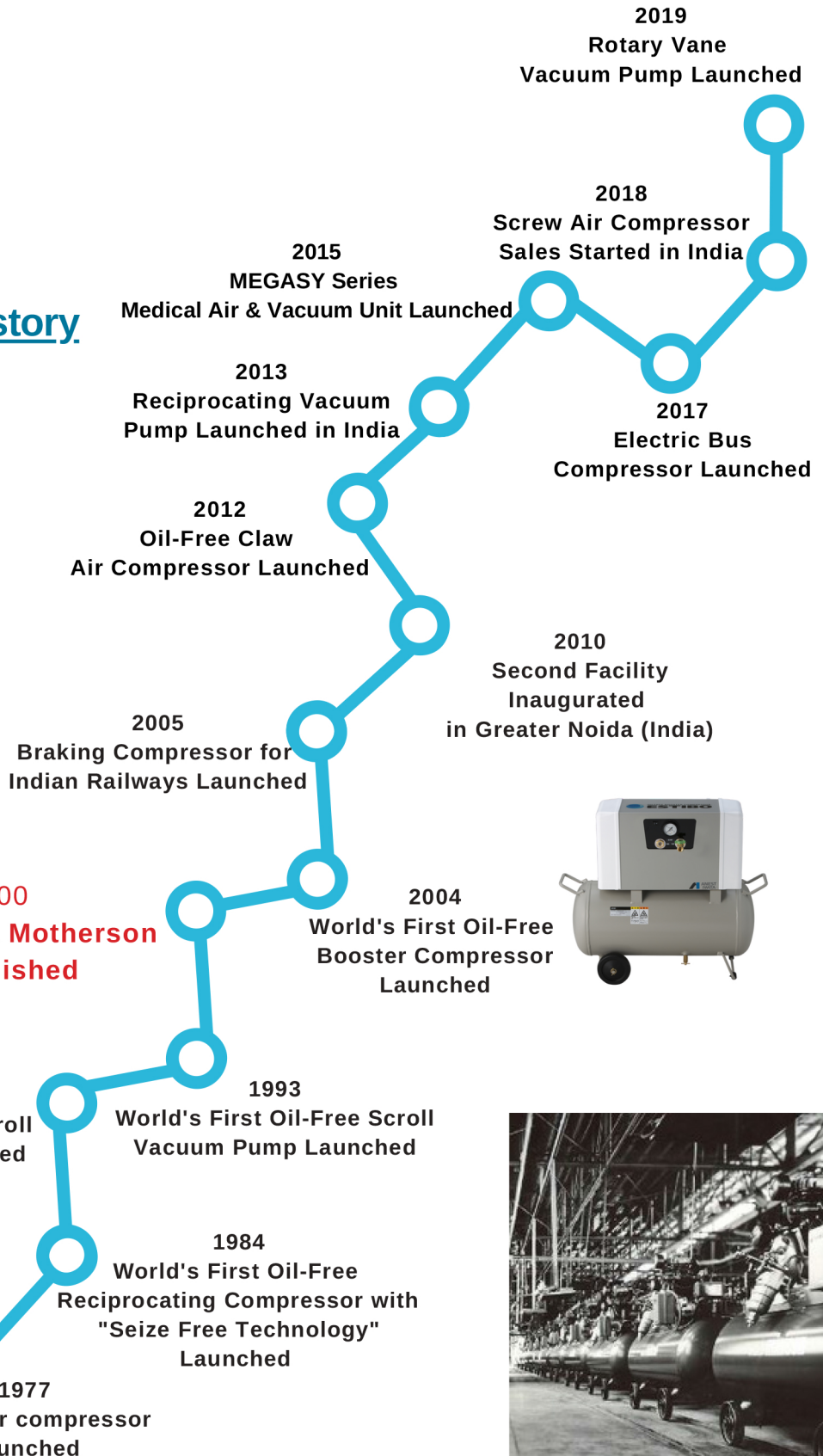
# Anest Iwata Motherson

Anest Iwata Motherson (AIM) is a joint venture between Anest Iwata Corporation, Japan, and Motherson Group, India. Anest Iwata Corporation is one of the global leaders in Air Compressors and Vacuum Pumps with more than 9 decades of inspiring history of technological excellence.

Anest Iwata Motherson is committed to delighting its customers by ensuring the supply of the best quality products, supported with effective after-sales services at optimum value. The company has two state-of-the-art manufacturing facilities and a wide network of sales and service centers spread across India.

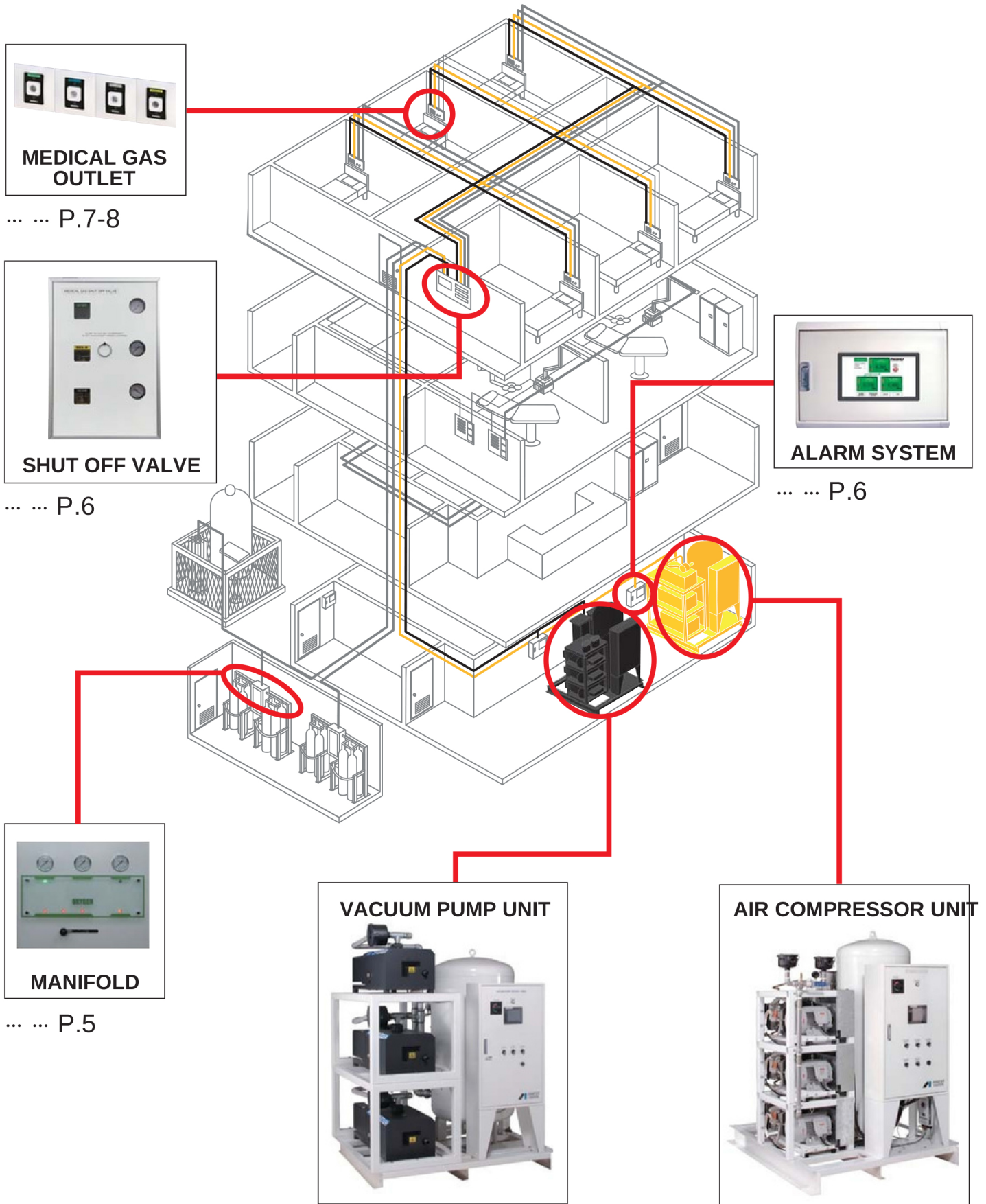
## Anest Iwata Inspiring History

Second Facility in Greater Noida



Established In Japan





**MEDICAL GAS OUTLET**

... .. P.7-8



**SHUT OFF VALVE**

... .. P.6



**ALARM SYSTEM**

... .. P.6



**MANIFOLD**

... .. P.5



**VACUUM PUMP UNIT**



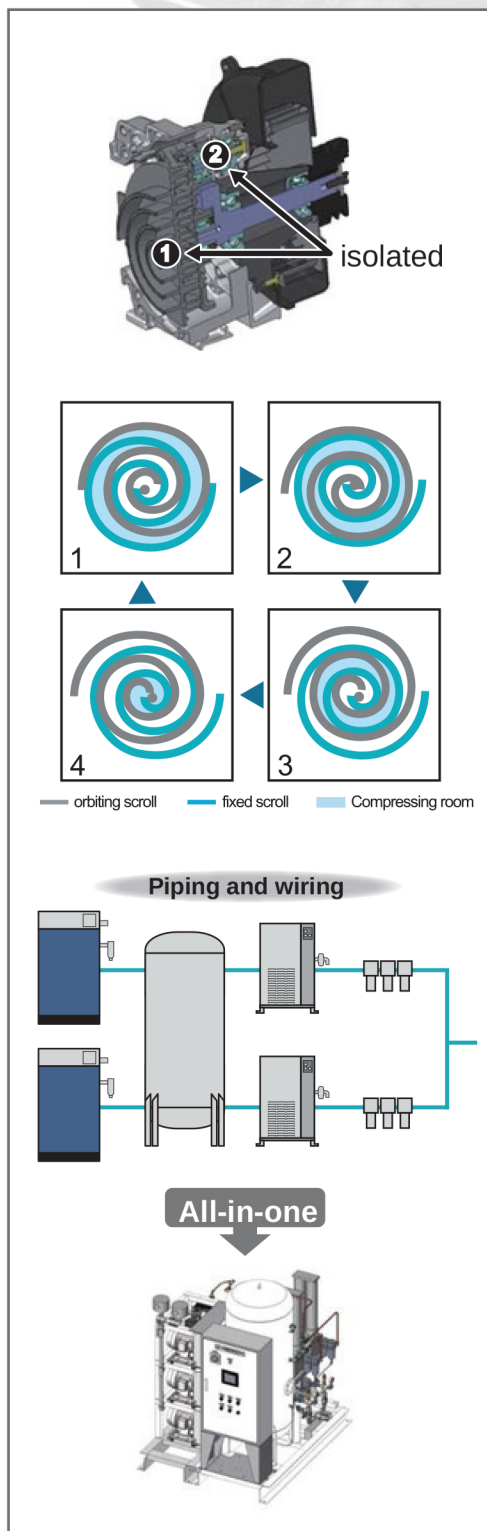
**AIR COMPRESSOR UNIT**

**MEDICAL GAS SUPPLY STATION... .. P.3-P.5**



Medico has 2 product lines of scroll compressor series and dry vacuum pump series. There are the “sustainable and clean” all-in-one system because there are oil-free type which does not use oil in the compression chamber.

It is safe due to backup capabilities of the device. It is easy to install because the piping and wiring between devices are not furnished. All-in-one design gives compact installation by one type with integrated air equipment. Also, it has backup functions as well.



### Cleanliness

#### Oil-free scroll compressor

This is mounted with oil-free scroll compressors. Oil-free Scroll Air compressor are able to supply a high quality clean air.

Any oil does not come into a compressing chamber due to this structural feature.



TÜV (Independent third party test house) has just certified that air quality from oilfree claw compressors and oilfree scroll compressors are in conformity with “Class0 (ISO8573-1:2010[-:-:0])”.

ANEST IWATA is able to supply high quality air to the application where oil contents are to be total removed, such as hospitally.

### Easy Start

Medico is all-in-one system integrated with filter, dryer, air tank and compressor.

The control and power devices are already integrated. It is easy to install compressor because the piping and wiring between devices are not necessary.

Additionally, anyone can easily wire the cable for alarms from dedicated controller.



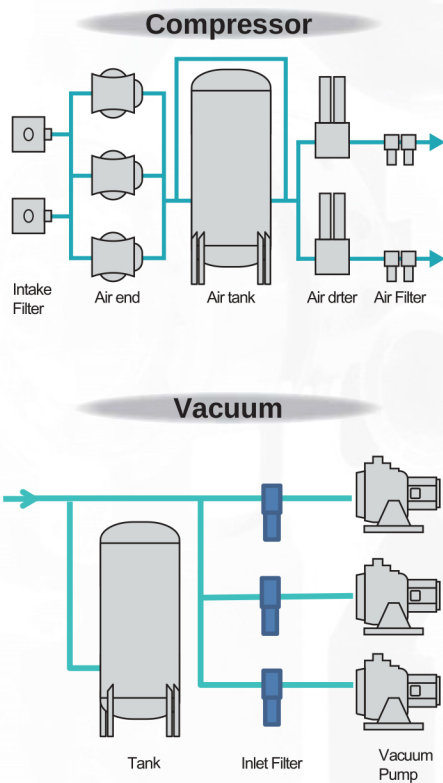


Air compressor unit

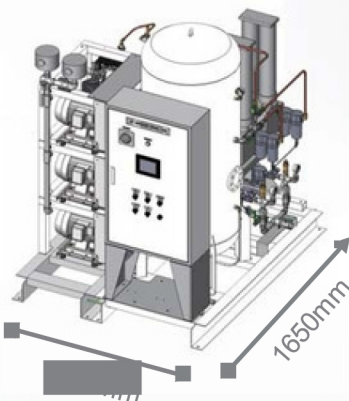


Vacuum pump unit

**Flow schematics**



**Regarding compressor of 10 HP**



**Safety**

Medico Compressor is safety conscious and designed based on NFPA 99 or HTM 2022 or HTM 02-01.

**1. Alarm system**

To be able to take prompt action when system goes wrong, several warning alarms can be activated.

- ① Compressor: Air pressure warning,  
Dew point warning,  
Exhaust air temperature warning,  
Maintenance time alarm
- ② Vacuum pump: Motor overload,  
Exhaust air temperature warning,  
Maintenance time alarm

**2. Back-up system**

Back-up system for all air line and control systems are installed to avoid shortage of air.

**Compact design**

Medico system consists of compressors or pumps, air receiver, filters and dryers (only compressor) which are efficiently assembled on the common frame and can be easily installed at minimized space.

**Features**

- 1. Less foot print than current products.
- 2. No vibration pads required because of low vibration.
- 3. Minimum installation cost since you do not need plumb pipings between equipments.

# Air compressor unit

## Oil free scroll type

Model		Air end	F.A.D. L/min	Pressure MPa	Power V	Air Tank L	Dryer type	Dew Point
Tank Mount	SLMT0202	Main 2HP+Backup 2HP×1	165	0.65-0.8 (air end)	Three Phase 380V and others	Horizontal 200	Membrane	Below -17°C <ADP>
	SLMT0302	Main 3HP+Backup 3HP×1	250					
	SLMT0502	Main 5HP+Backup 5HP×1	410					
Frame Type	SLM0403	Main 4HP(2HP×2)+ Backup 2HP×1	330			Vertical 200	Desiccant	
	SLM0603	Main 6HP(3HP×2)+ Backup 3HP×1	500					
	SLM1003	Main 10HP(5HP×2)+ Backup 5HP×1	820					
	SLM2006	Main 20HP(5HP×4)+ Backup 10HP(5HP×2)×1	1640					
	SLM3009	Main 30HP(5HP×6)+ Backup 15HP(5HP×3)×1	2460					

F.A.D. means the average discharged air volume at maximum operating pressure converted into atmospheric pressure.

# Vacuum pump unit

## Dry claw type

Model	Vacuum end	19"HgV Capacity L/min		Power V	Vac Tank L
		50Hz	60Hz		
Tank Mount	CDST0202	Main 2HP+Backup 2HP×1	433	533	Horizontal 400
	CDST0302	Main 3HP+Backup 3HP × 1	583	750	
	CDST0402	Main 4HP + Backup 4HP×1	778	972	Horizontal 600
	CDST0502	Main 5.5HP+Backup 5.5HP×1	1111	1333	
Frame Mount	CDSM0803	Main 8HP(4HP×2)+ Backup 4HP×1	1556	1994	Vertical 600
	CDSM1103	Main 11HP(5.5HP×2)+ Backup 5.5HP×1	2222	2667	
	CDSM1503	Main 15HP(7.5HP×2)+ Backup 7.5HP×1	3333	4000	Vertical 1000
	CDSM2204	Main 22HP(7.5HP×3)+ Backup 7.5HP×1	5000	6000	

All capacities are shown at 19 inches HgV (backup pump on standby).

# Manifold



	Automatic switching		Semi-automatic Switching
	Normal	High Volume	
Max. Flowrate	500L/min	1000L/min	50L/min
Medical Gas	Oxygen, Nitrous Oxide, Medical Air, Nitrogen, Carbon Dioxide		



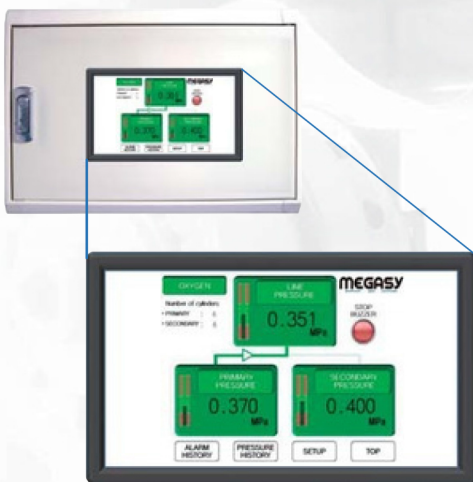
## Safe and Reliable Medical Gas System.

Medical gas system is a important facility in the hospitals which expected to perform safely and accurately. Central control system harmonizes all the equipment such as Compressor, Dryer and filters to provides safe and stable medical gas supply in the hospitals.

With highly reliable and durable products comply with various medical standards, along with broad maintenance network ensures Safe and Reliable medical gas supplies.

## Alarm System

### ■ Master Alarm



2-6 gases can be indicated

### ■ Area Alarm



2-6 gases can be indicated

## Shut Off Valve

### ■ Open Type



### ■ Box Type



Maximum 7 valves in one box  
Size of Valve is 1/2"~3"



ANEST IWATA Outlets are available in all major standards with ISO22196 certified SIAA antibacterial coating. Antibacterial function of In-room facility where contact with users occurs contributes to hygiene hospital environment.



### Wall Type

#### ■Chemetron Type



#### ■Ohmeda Type



#### ■Puritan Bennett Type



#### ■Multi-Console Unit



#### ■Multi-Console Unit



## Ceiling Type

### ■ Ceiling Type Outlet



### ■ Reel Type Outlet



### ■ Retractable Ceiling Column



### ■ Ceiling Module





**Safe, Functional and easy to use Secondary equipment.**

Medical gas through the outlets should be supplied via safe secondary equipment. Our secondary offer safe and secure operation with user friendly design.

### Flowmeter with Humidifier

#### ■F-3 series

Model	Flow rate
F-315	0~ 15L/min
F-301	0~1L/min
F-302	0~2L/min
F-303	0~3L/min
F-5	0~15L/min
F-6	0~15L/min



#### ■F-5 series



### Suction Unit with Regulator

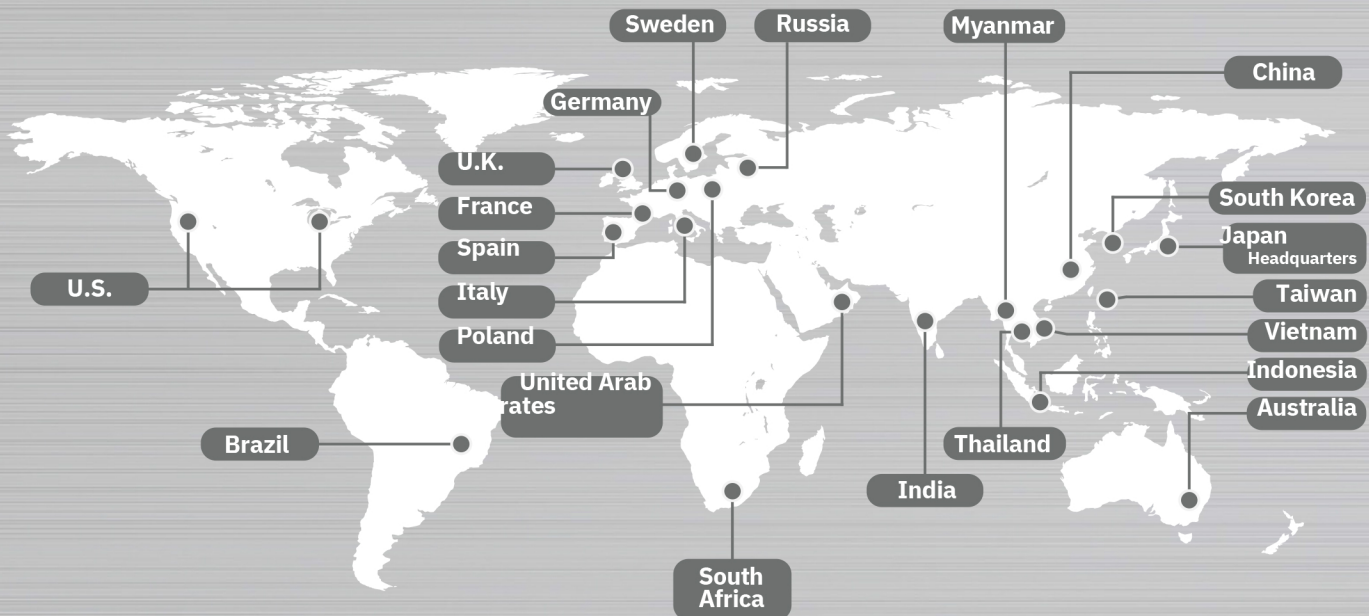
#### ■AV-5 series    ■AV-3 series    ■AV-2 series

Model	Material	Notes
AV-5G	Glass	—
AV-5GN	Glass	for MRI
AV-5R	Plastic	—
AV-5RN	Plastic	for MRI
AV-3	Glass	—
AV-3AN	Glass	for MRI
AV-2	Glass	—
AV-2AN	Glass	for MRI





# ANEST IWATA Global Network



## **SIAA** Society of Industrial technology for Antimicrobial Articies

SIAA ISO22196 for KOHKIN is a global standard for antibacterial efficacy based on JIS(Japanese Industrial Standard) JIS Z 2801. Products which is manufactured under strict quality control and satisfy SIAA regulation of Antibacterial, Safety and Fairness in labeling can carry SIAA marking.

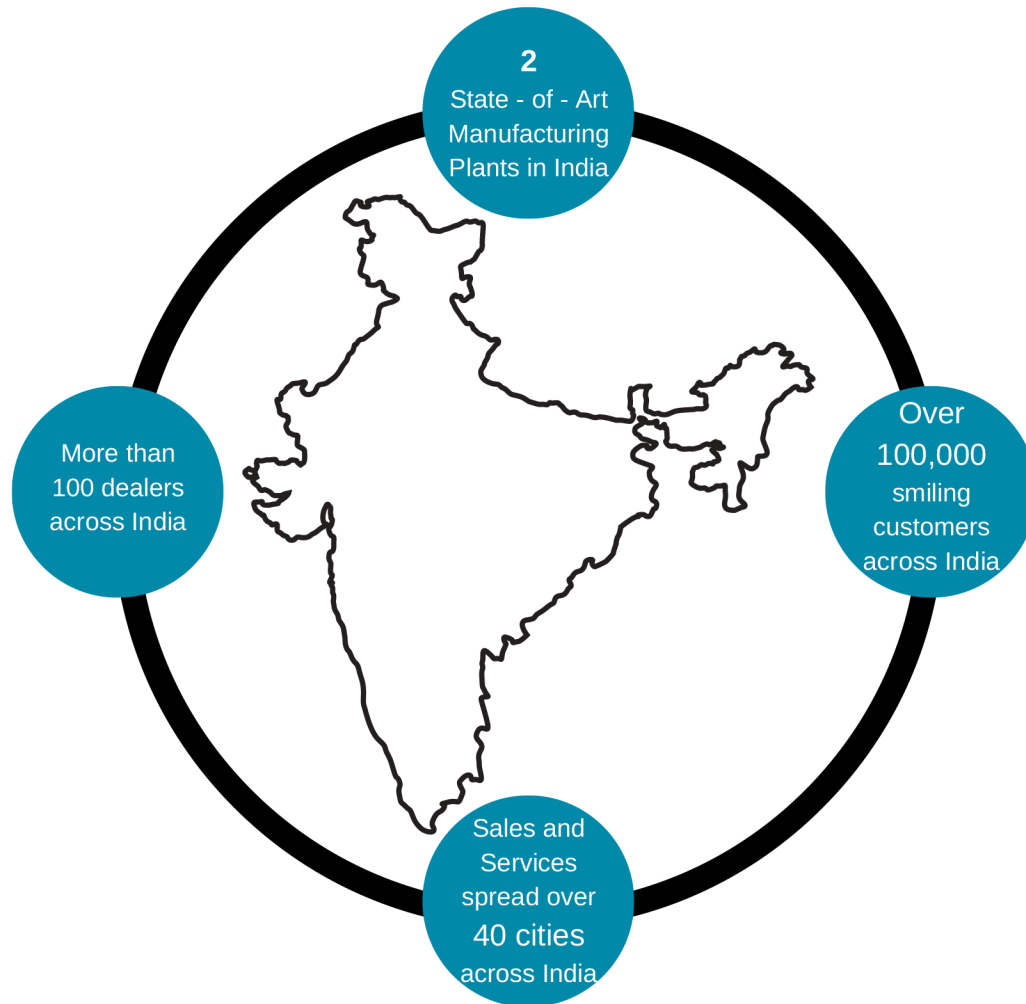


## **IMPORTANT**

Please observe all safety precautions written in instruction manuals, local and national laws and regulations, and corporate regulations.  
Make sure to read and follow all the safety precautions written in instruction manuals and local laws and regulations related to this product.



**Active** with Newest Technology



**AS AN AUTHORIZED CHANNEL PARTNER OF  
ANEST IWATA MOTHERSON PVT. LTD.**



**DELTA COMPRESSORS & EQUIPMENTS**

41/608-A, MUKKANNIYIL APARTMENTS, K.D PLOT P.O

S.KALAMASSERY, ERNAKULAM - 683104

E-Mail : [delta.compres@gmail.com](mailto:delta.compres@gmail.com)

Web: [www.deltacompressors.in](http://www.deltacompressors.in)

For any details reach us at: 24 x 7 Service Helpline: +91 9447205440, 9895678611

Proud to be part of samvardhana **mothererson**